

# SLOVENSKÝ ELEKTROENERGETICKÝ DISPEČING

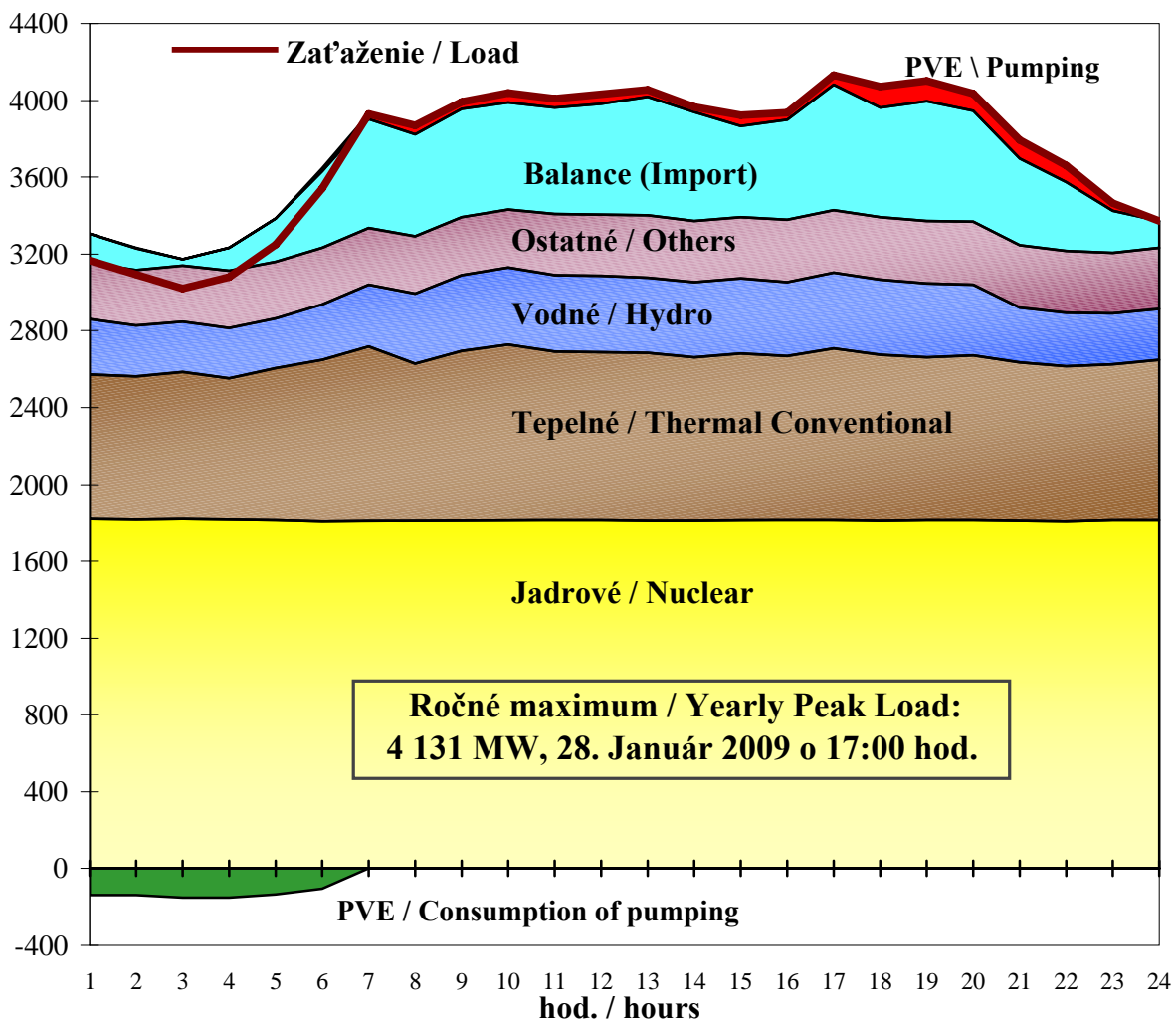
## National Control Centre of Slovakia



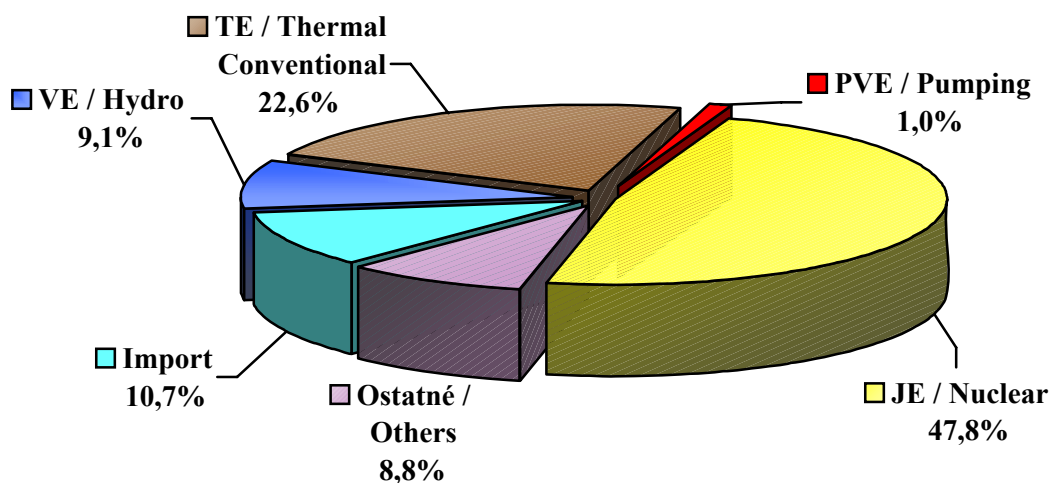
SLOVENSKÁ ELEKTRIZAČNÁ PRENOŠOVÁ SÚSTAVA, a.s.

2009

## POKRYTIE ZAŤAŽENIA V DEŇ ROČNÉHO MAXIMA (MW) Load and Use of Sources on Day of Yearly Peak (MW)



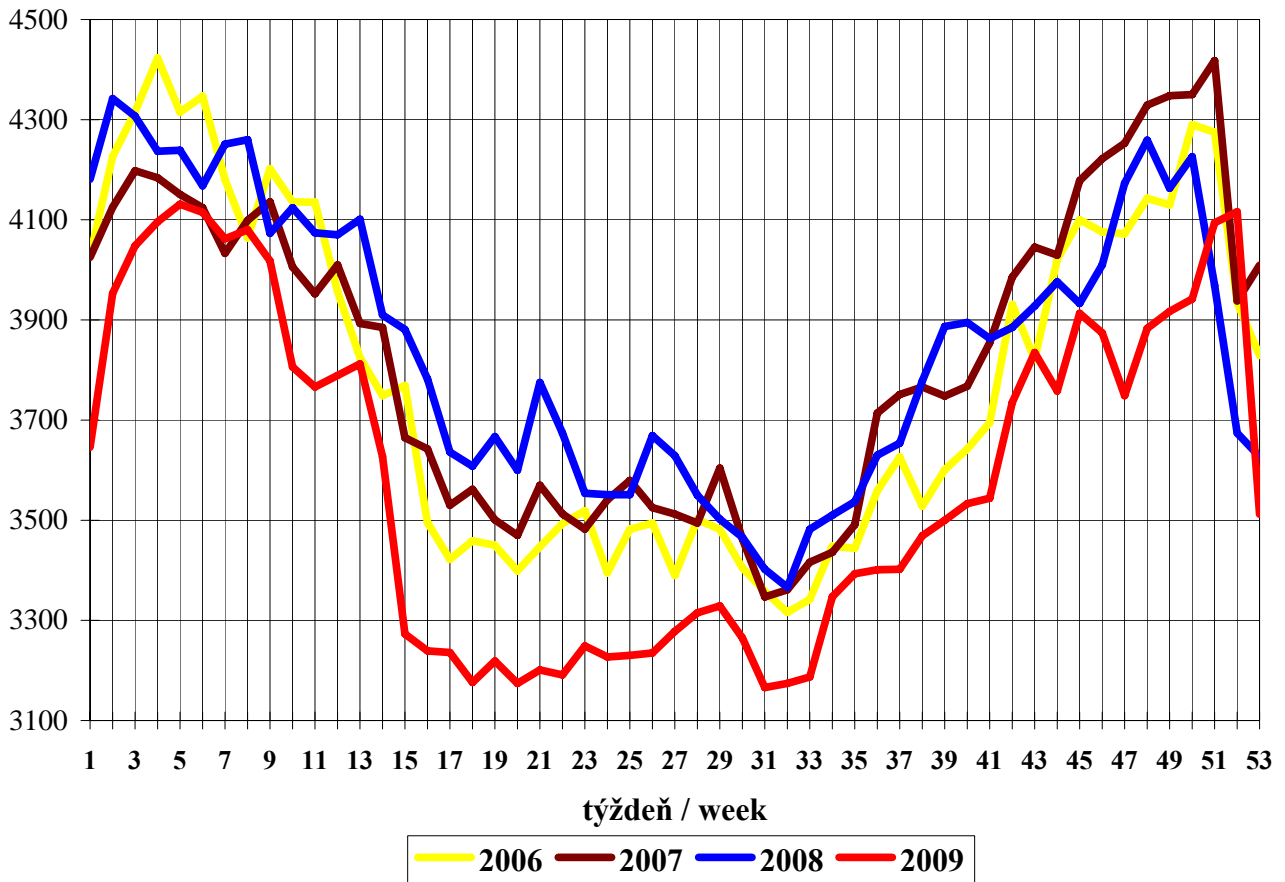
## VÝROBA ELEKTRINY V DEŇ ROČNÉHO MAXIMA (28.1.) Production of Electricity on the Day of Yearly Peak



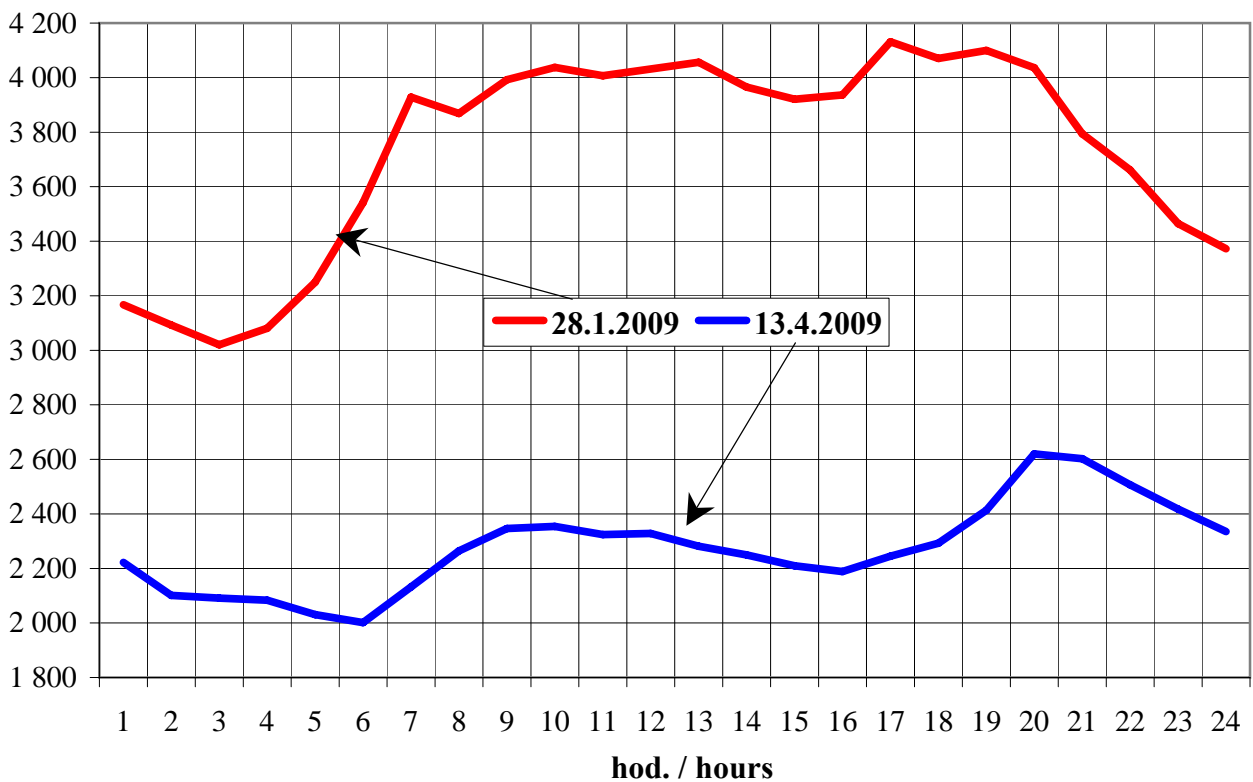
Uvedené údaje sú **brutto**.  
Shown data are **brutto**.

**Výroba / Production:** 81 475 MWh  
**Import (saldo / balance):** 9 726 MWh  
**Spotreba / Consumption:** 91 201 MWh

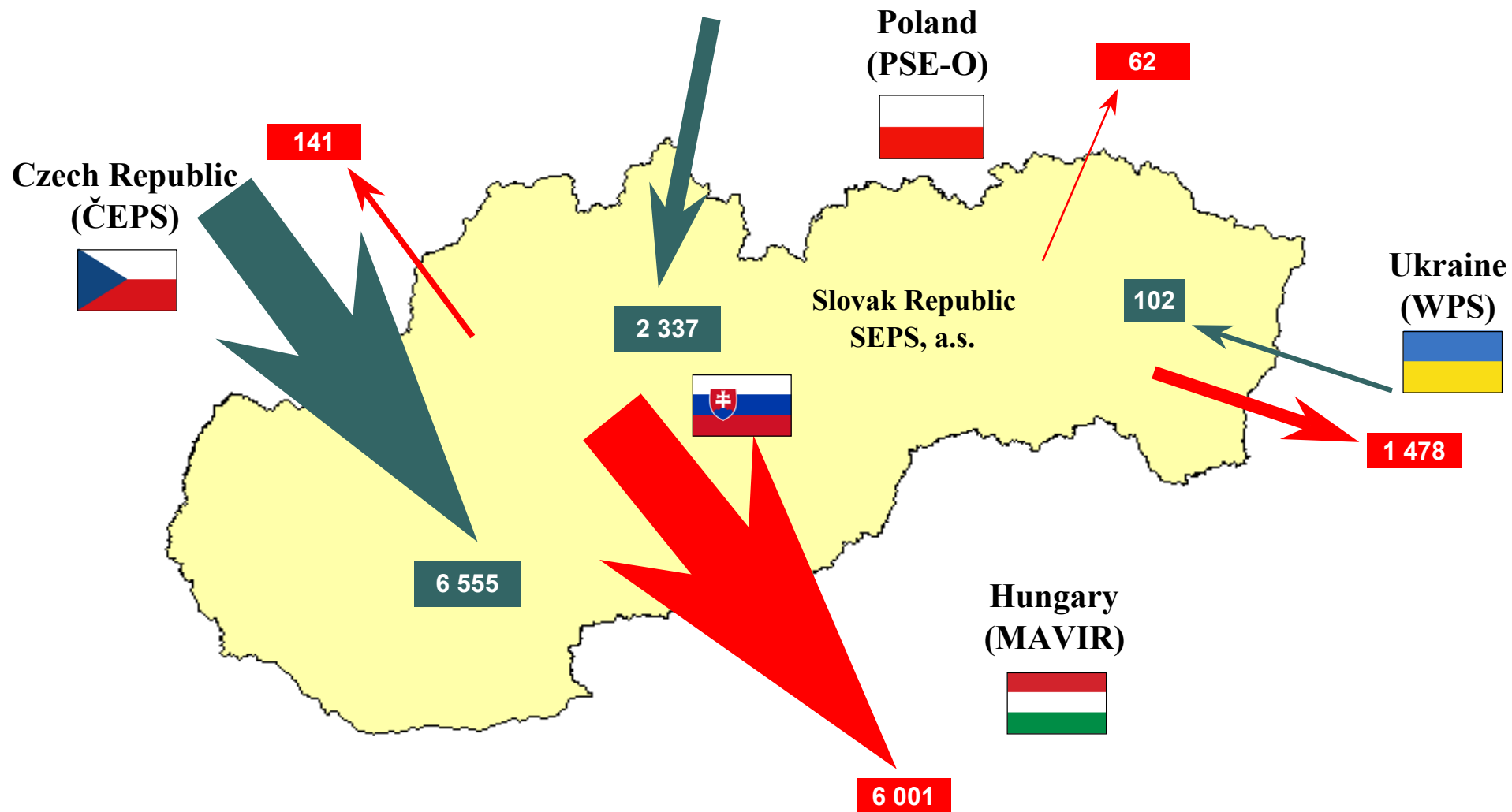
## TÝŽDENNÉ MAXIMÁ ZAŤAŽENIA (MW) Weekly Peak Loads (MW)



## PRIEBEH ZAŤAŽENIA V DŇOCH ROČNÉHO MAXIMA A MINIMA (MW) Load Curves on Days of the Peak and Minimum of the Year (MW)

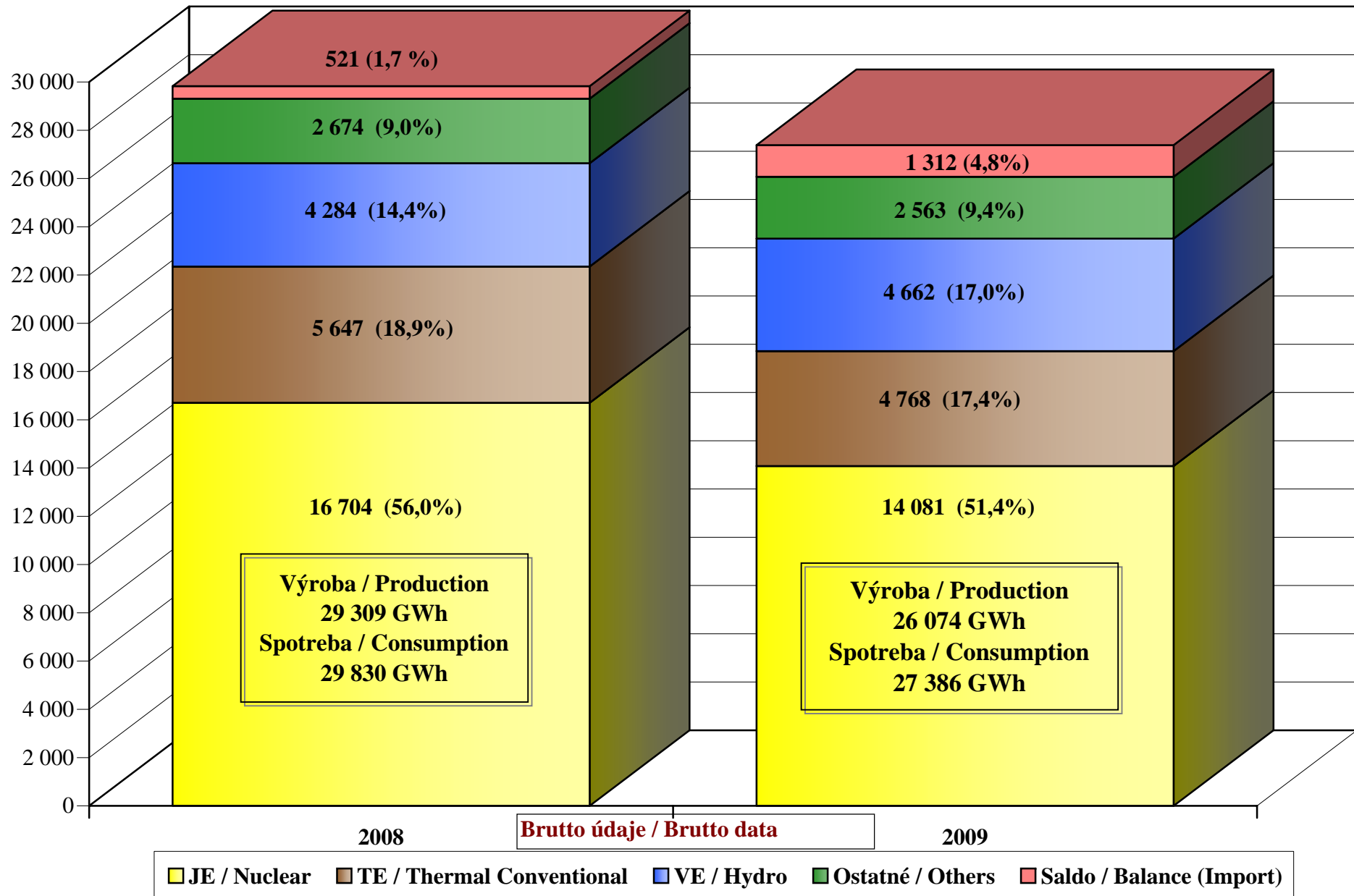


**NAMERANÉ CEZHRANIČNÉ PRENOSY ELEKTRINY ES SR (GWh)**  
**Metered Cross-Border Flows of Electricity (GWh)**

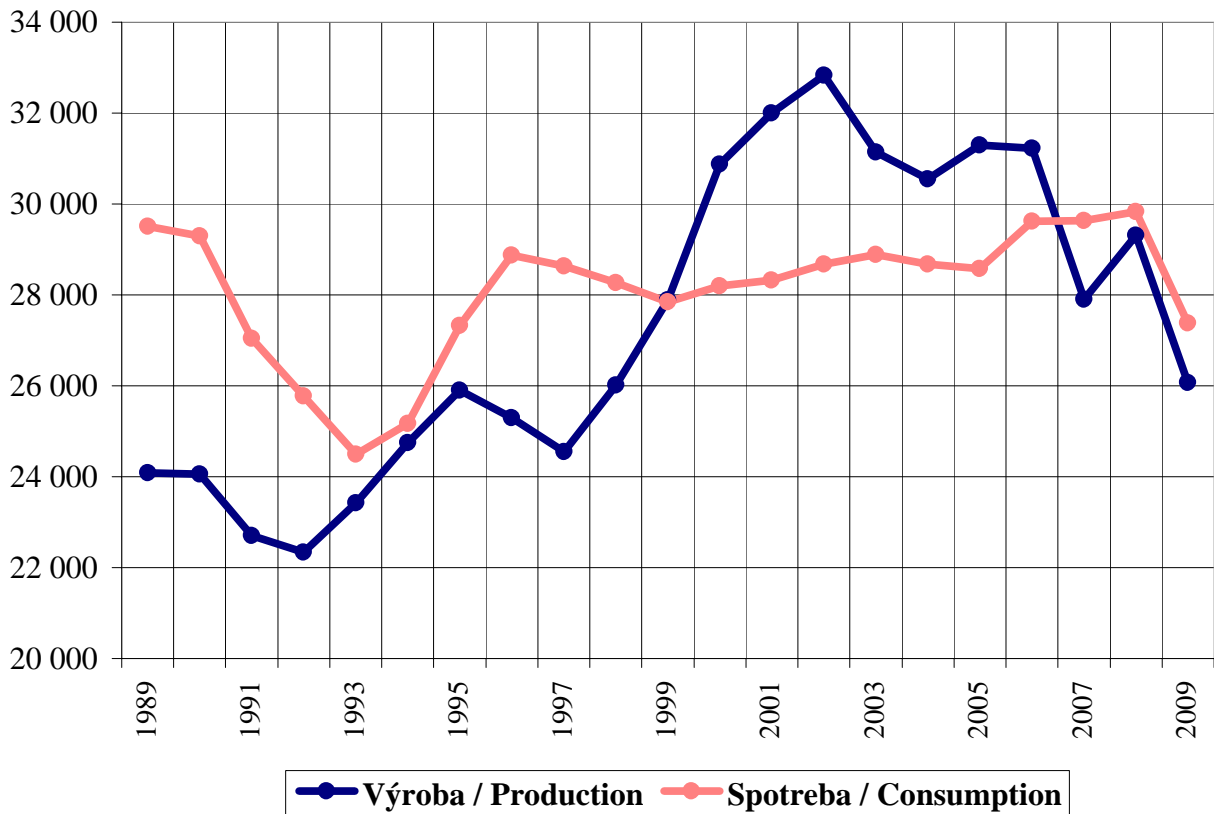


**Σ Import: 8 994 GWh, Σ Export: 7 682 GWh, Saldo / Balance (Imp): 1 312 GWh**

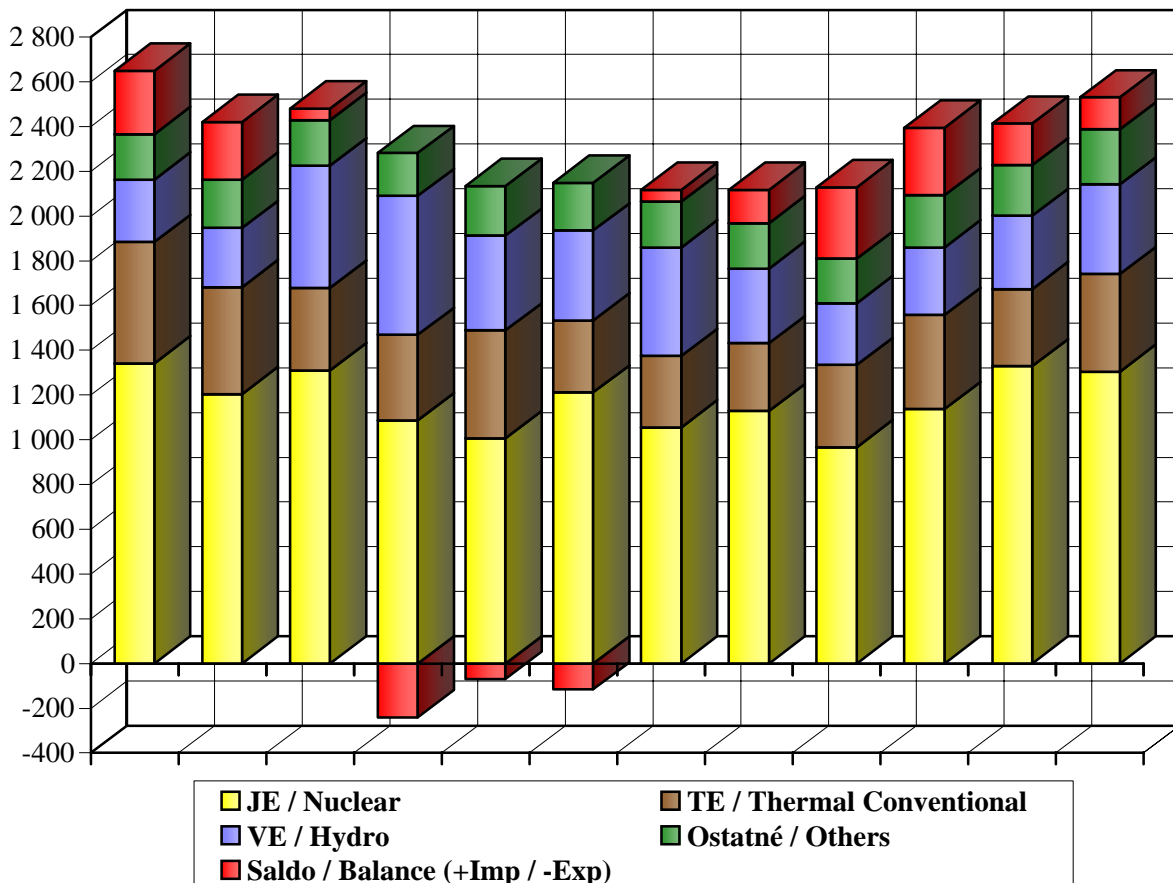
**PODIEL ZDROJOV NA POKRÝVANÍ ROČNEJ SPOTREBY (GWh)**  
**Share of sources covering yearly consumption (GWh)**



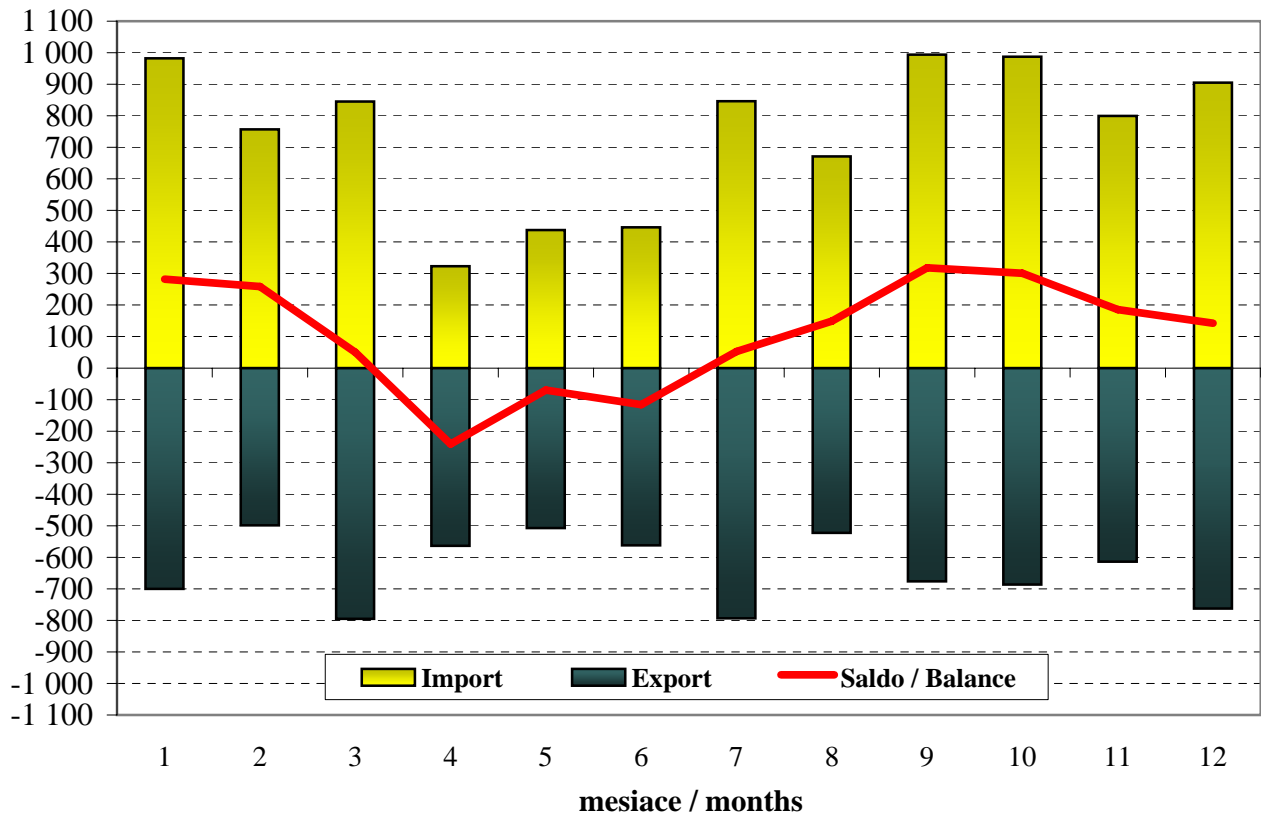
## ROČNÁ VÝROBA A SPOTREBA ELEKTRINY (GWh) Yearly Electricity Production and Consumption (GWh)



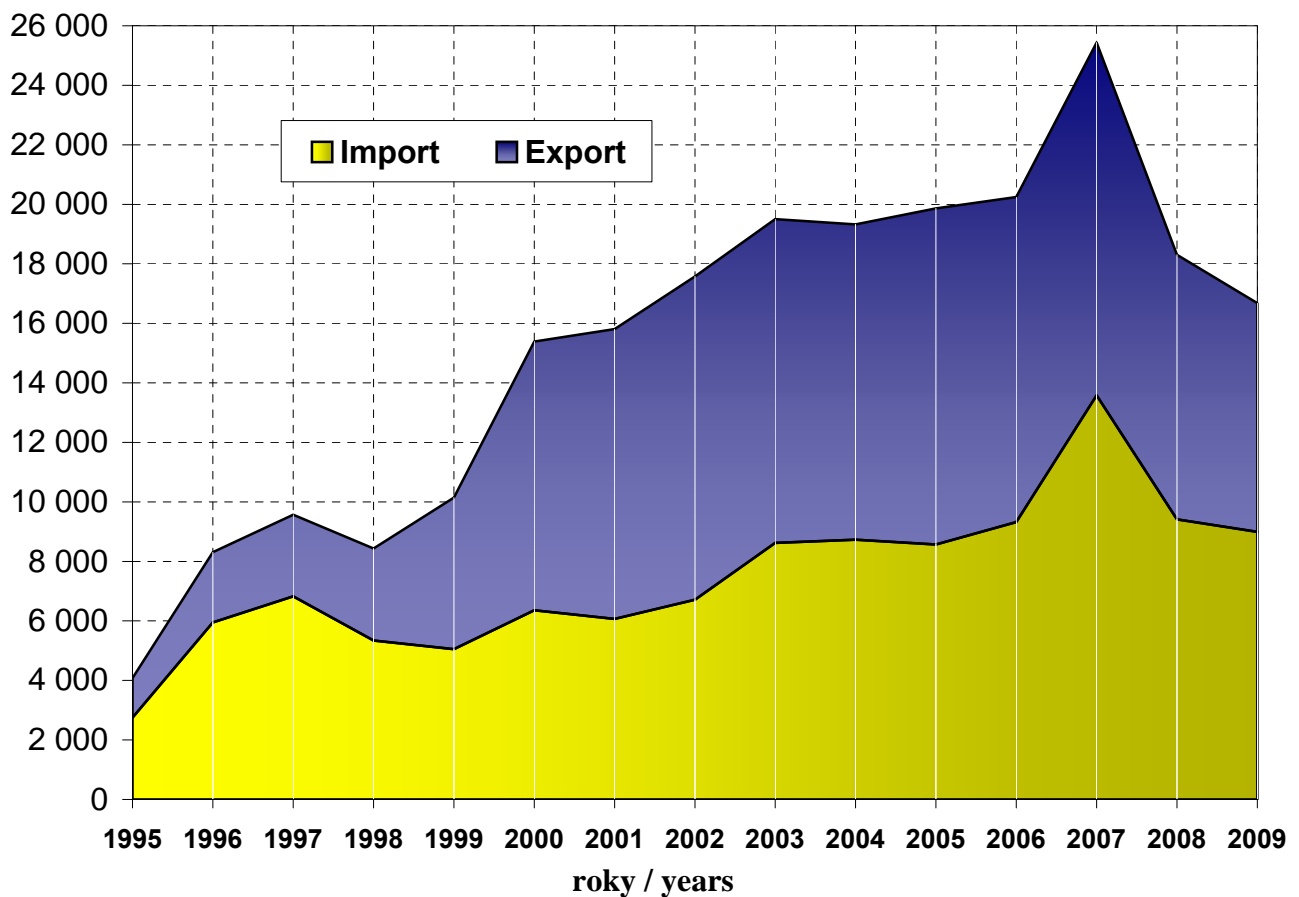
## PODIEL ZDROJOV NA POKRÝVANÍ MESAČNEJ SPOTREBY (GWh) Share of sources covering monthly consumption (GWh)



**NAMERANÉ MESAČNÉ CEZHRANIČNÉ PRENOSY ES SR (GWh)**  
**Monthly Metered Cross-Border Flows of Slovakia (GWh)**

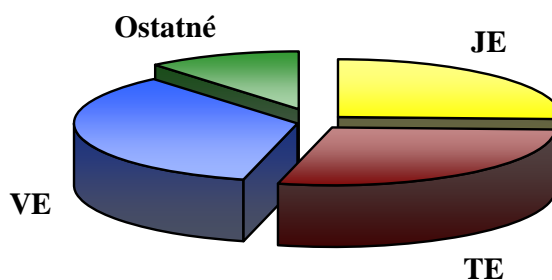


**NAMERANÉ CEZHRANIČNÉ PRENOSY ES SR (GWh)**  
**Metered Cross-Border Flows of Slovakia (GWh)**

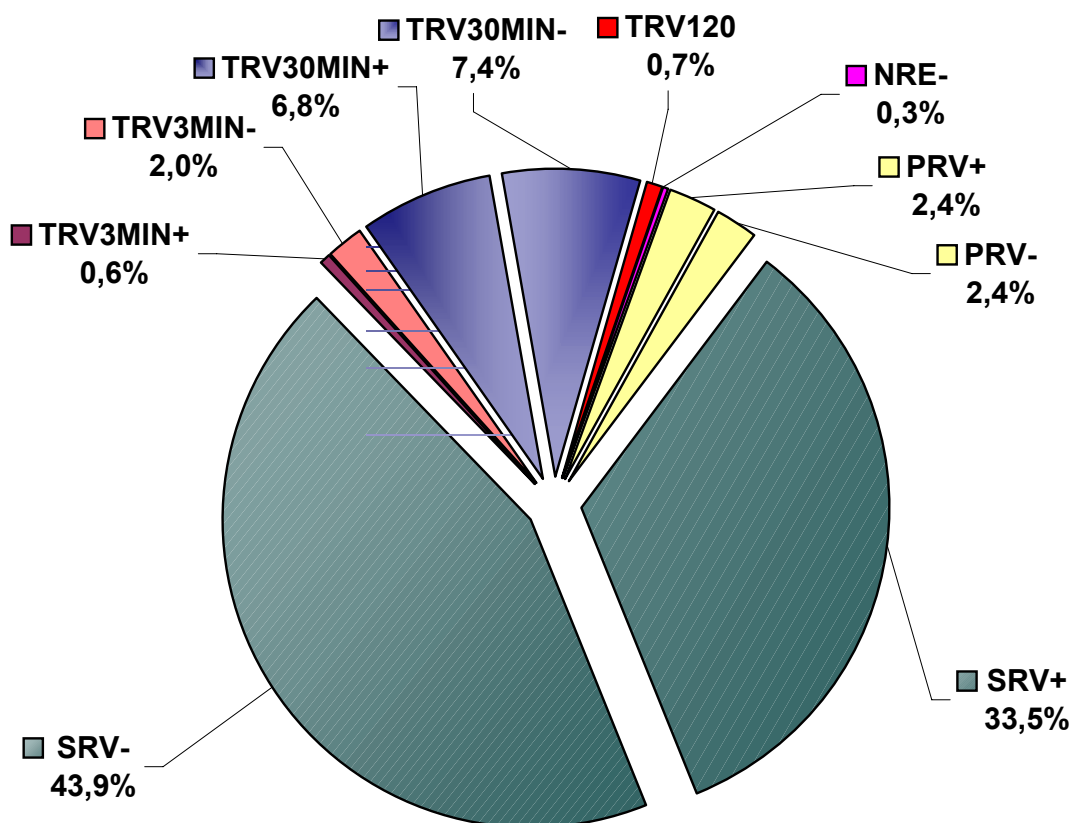


## INŠTALOVANÝ VÝKON ELEKTRÁRNÍ ES SR Installed Capacity of Power plants in Slovakia

Elektrárň	MW	%	Type
JE	1 820	25,6	Nuclear
TE	2 009	28,3	Thermal
VE	2 478	34,9	Hydro
Ostatné	794	11,2	Others
<b>Suma</b>	<b>7 101</b>		<b>Total</b>



## ROČNÁ DODÁVKA REGULAČNEJ ELEKTRINY DO ES SR Yearly Supply of Regulation Electricity in the Power System



## PRENOSOVÁ SÚSTAVA SLOVENSKEJ REPUBLIKY Transmission System of Slovak Republic

Celkový transformačný výkon	<b>10 010 MVA</b>	Total transformation capacity
Vedenia 400 kV	<b>1 776 km</b>	400 kV Lines
Vedenia 220 kV	<b>962 km</b>	220 kV Lines
Rozvodne 400 kV	<b>17</b>	400 kV Substations
Rozvodne 220 kV	<b>8</b>	220 kV Substations
Transformátory 400/220 kV	<b>1 400 MVA</b>	400/220 kV Transformers
Transformátory 400/110 kV	<b>6 410 MVA</b>	400/110 kV Transformers
Transformátory 220/110 kV	<b>2 200 MVA</b>	220/110 kV Transformers