

Slovenský Elektroenergetický Dispečing

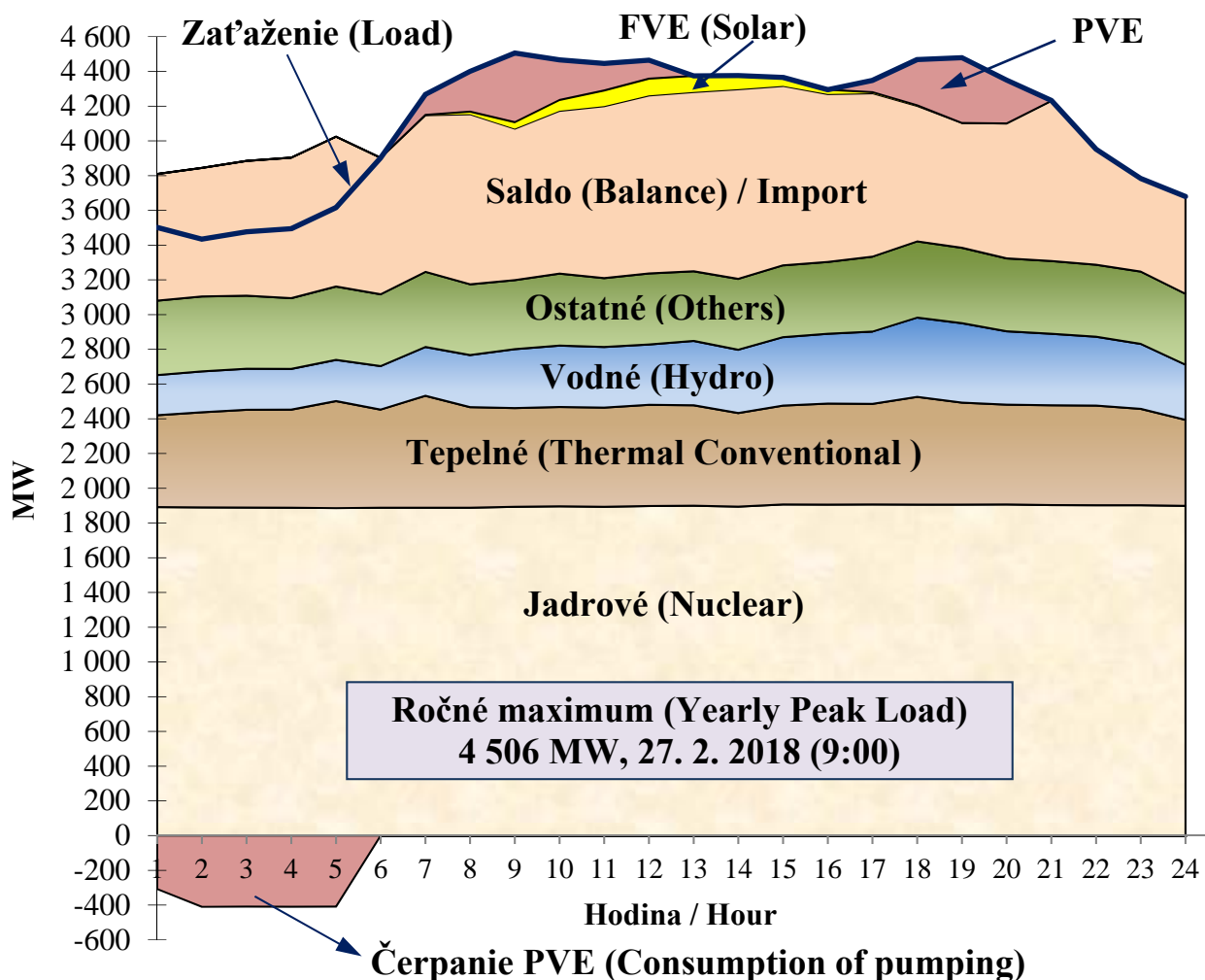
National Control Centre of Slovakia

2018

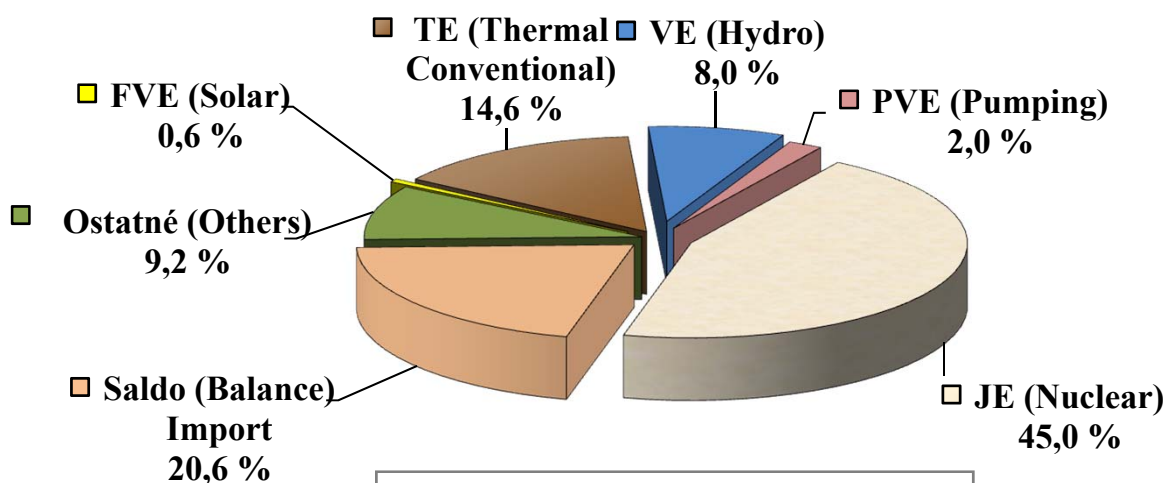


SLOVENSKÁ ELEKTRIZAČNÁ PRENOŠOVÁ SÚSTAVA, a.s.

POKRYTIE ZAŤAŽENIA V DNI ROČNÉHO MAXIMA 27.2.2018 Load-Curve Coverage on Day of Yearly Peak 27 Feb 2018



PODIEL ZDROJOV V DNI ROČNÉHO MAXIMA 27.2.2018 Share of Generation on Day of Yearly Peak 27 Feb 2018



27 February 2018

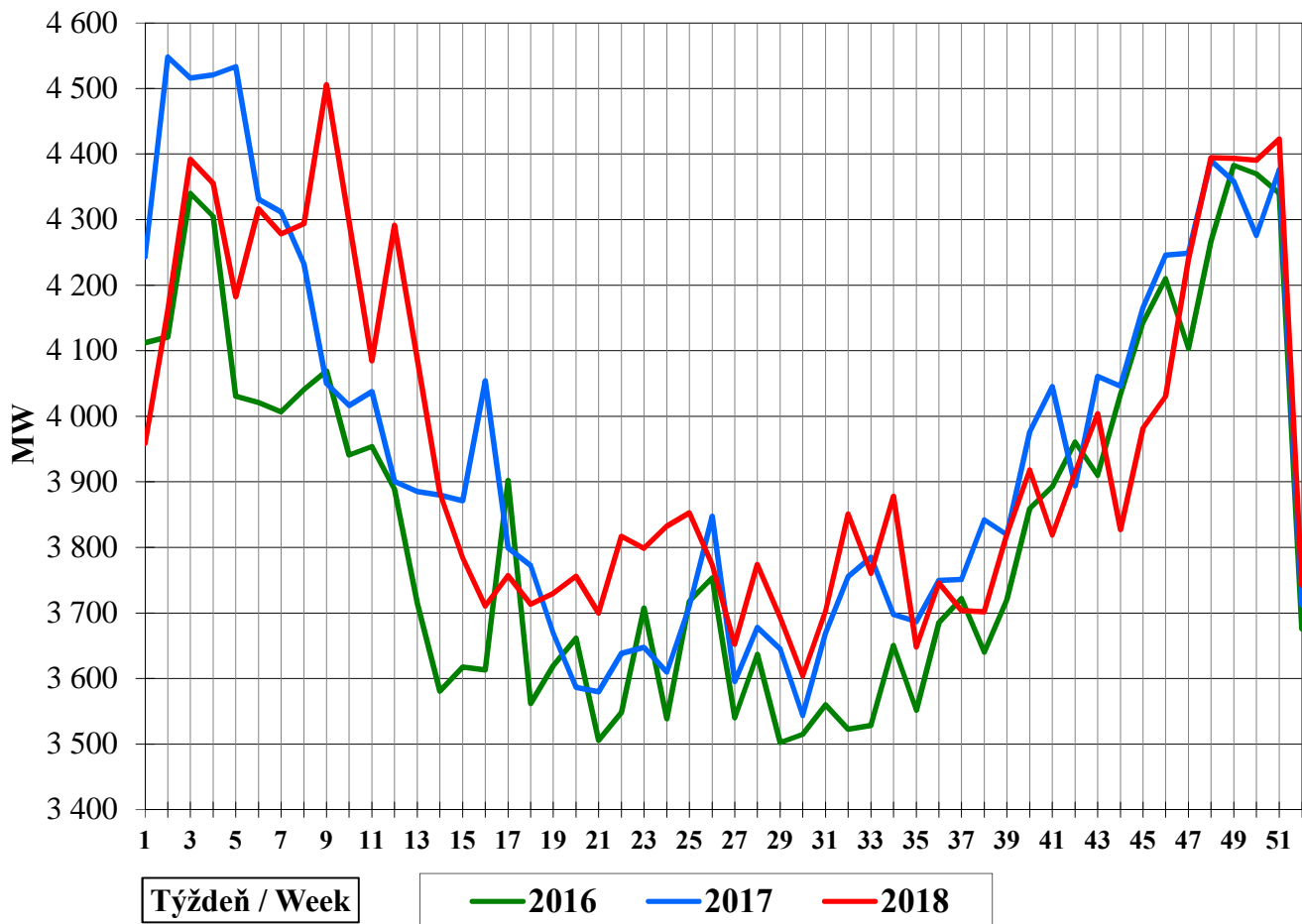
Výroba (Production) 80 GWh

Saldo (Balance) Import 21 GWh

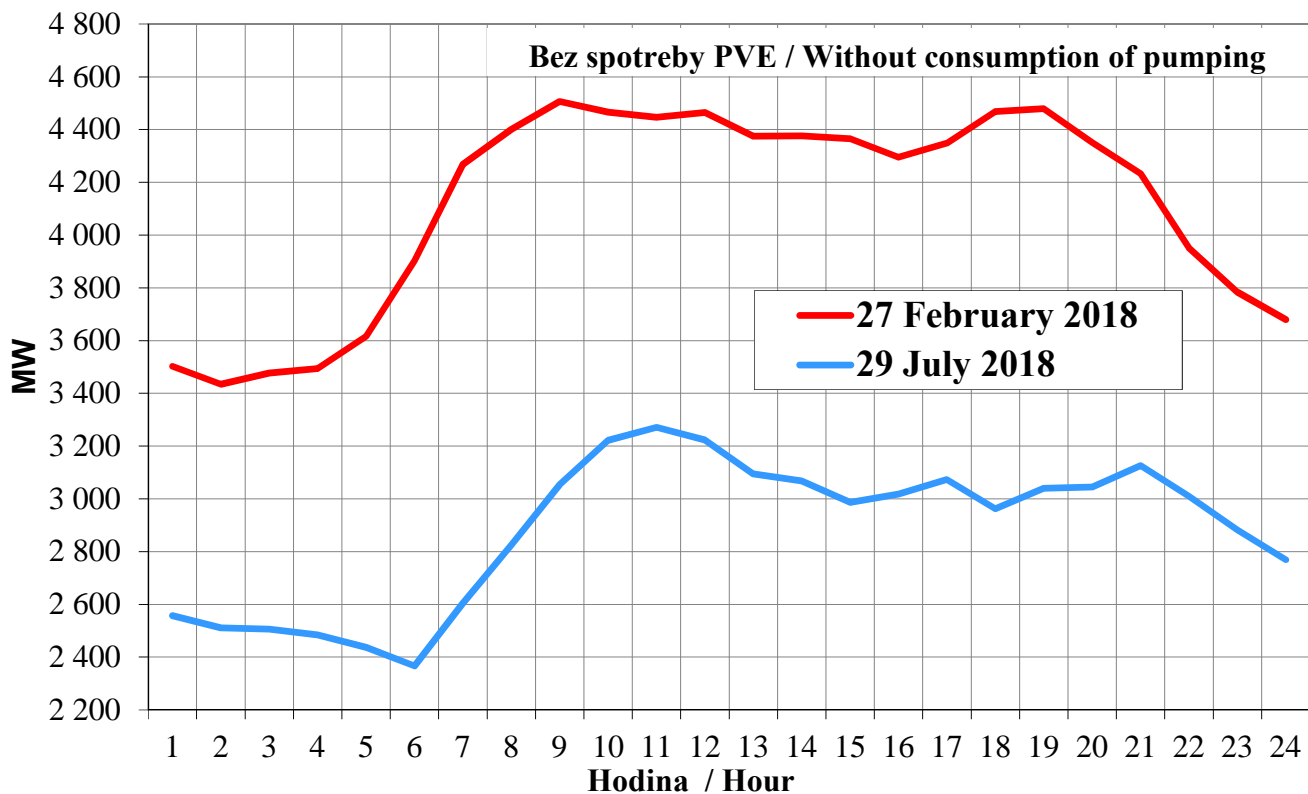
Spotreba (Consumption) 101 GWh

Údaje sú brutto, vrátane spotreby PVE / Data are brutto, including consumption of pumping

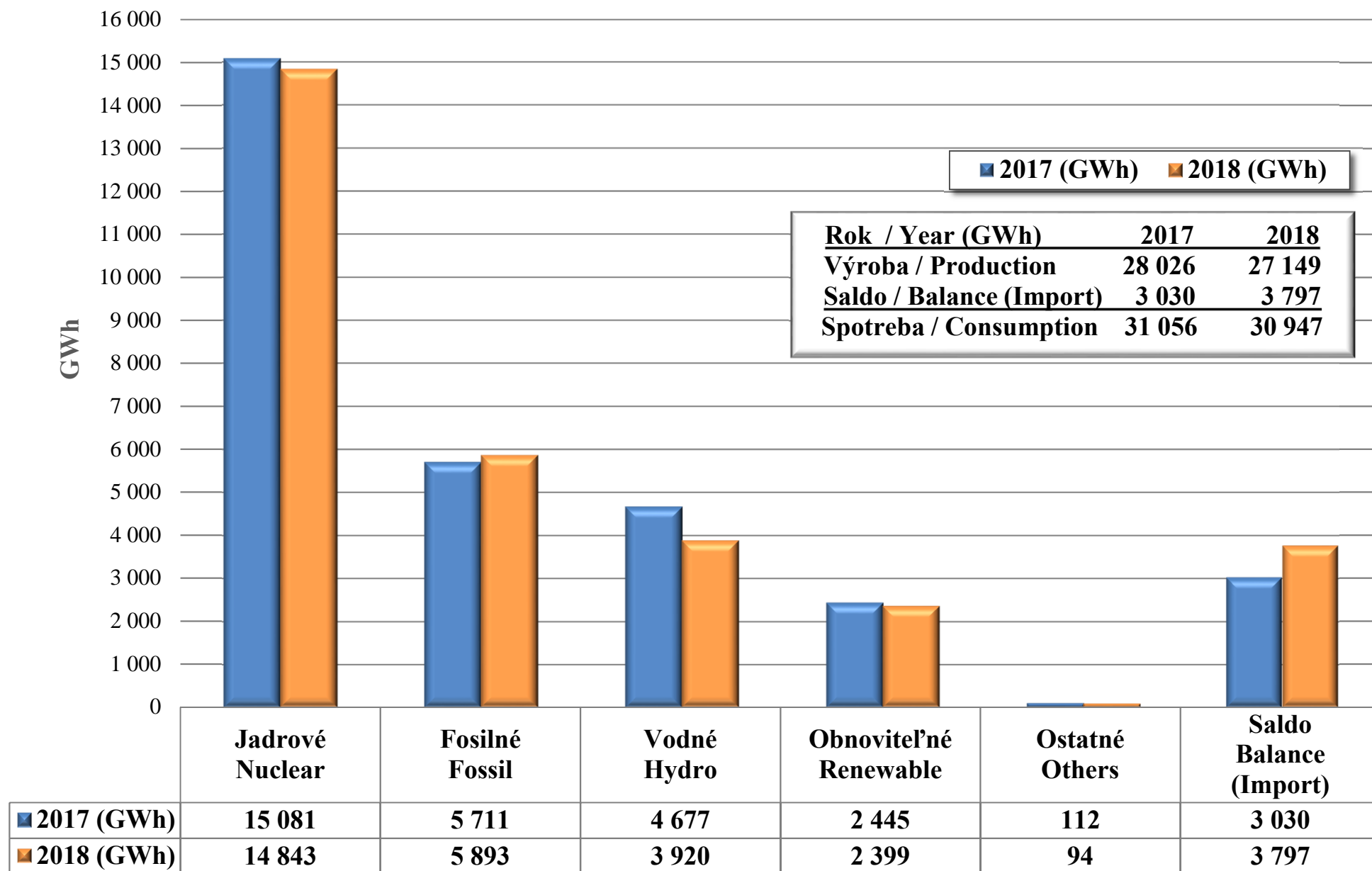
TÝŽDENNÉ MAXIMÁ ZAŤAŽENIA Weekly Peak Loads



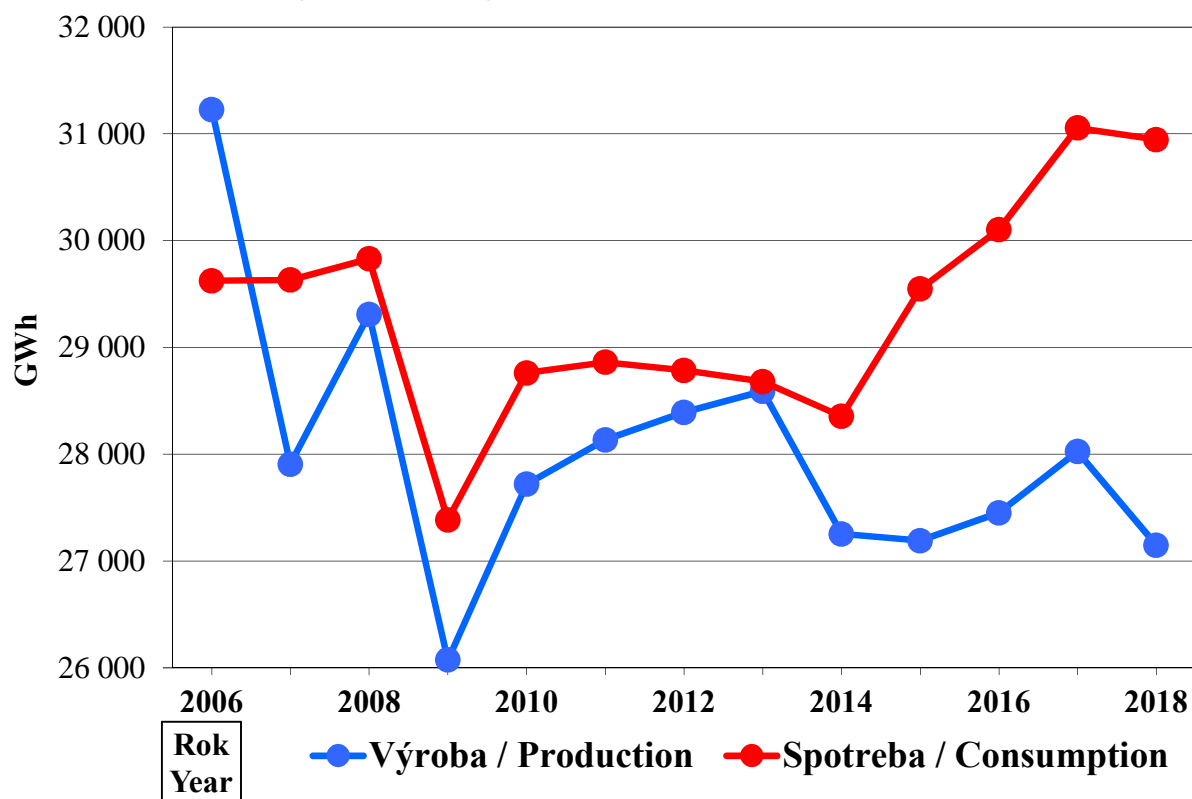
PRIEBEH ZAŤAŽENIA V DŇOCH ROČNÉHO MAXIMA A MINIMA 2018 Load Curves on Days of Yearly Peak and Minimum of 2018



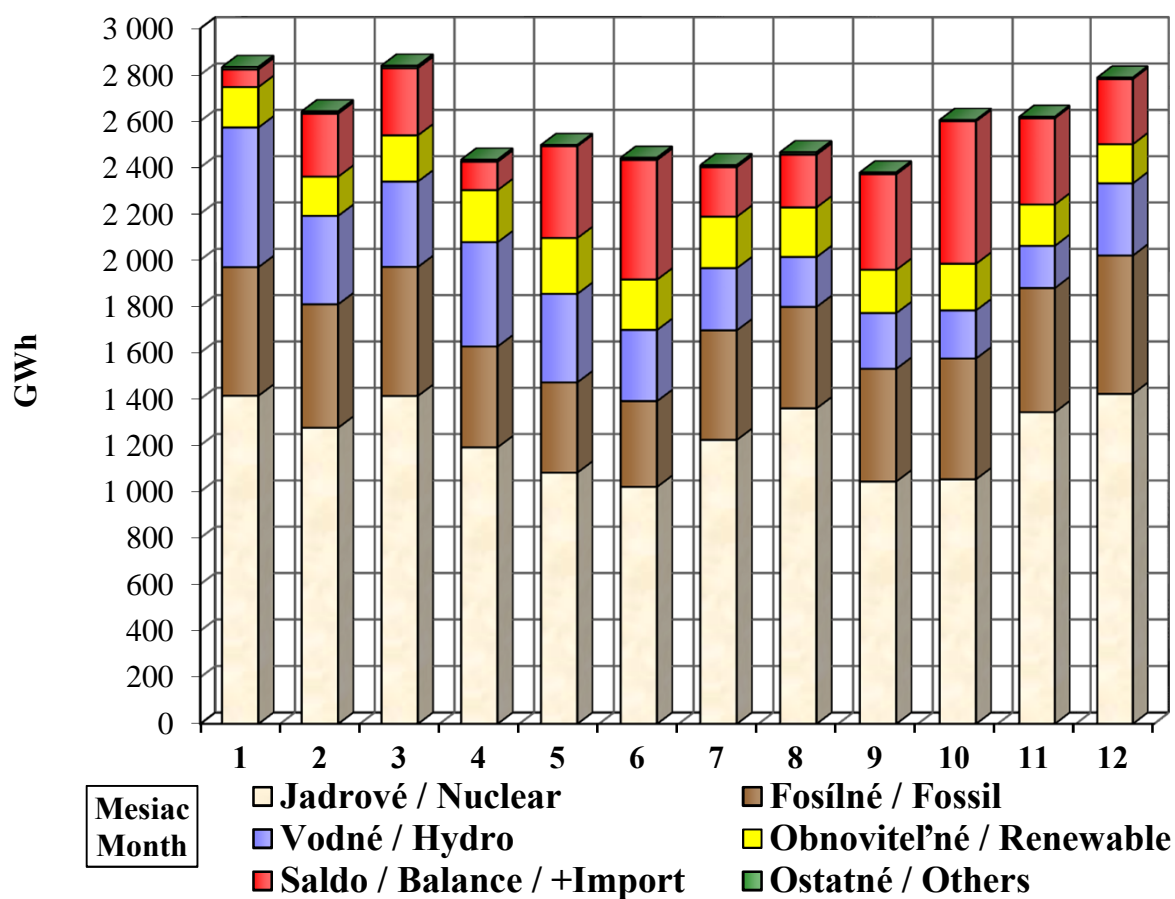
PODIEL ZDROJOV NA VÝROBE ELEKTRINY V ROKOCH 2017 - 2018
Share of Sources in the Electricity Production of Years 2017 - 2018



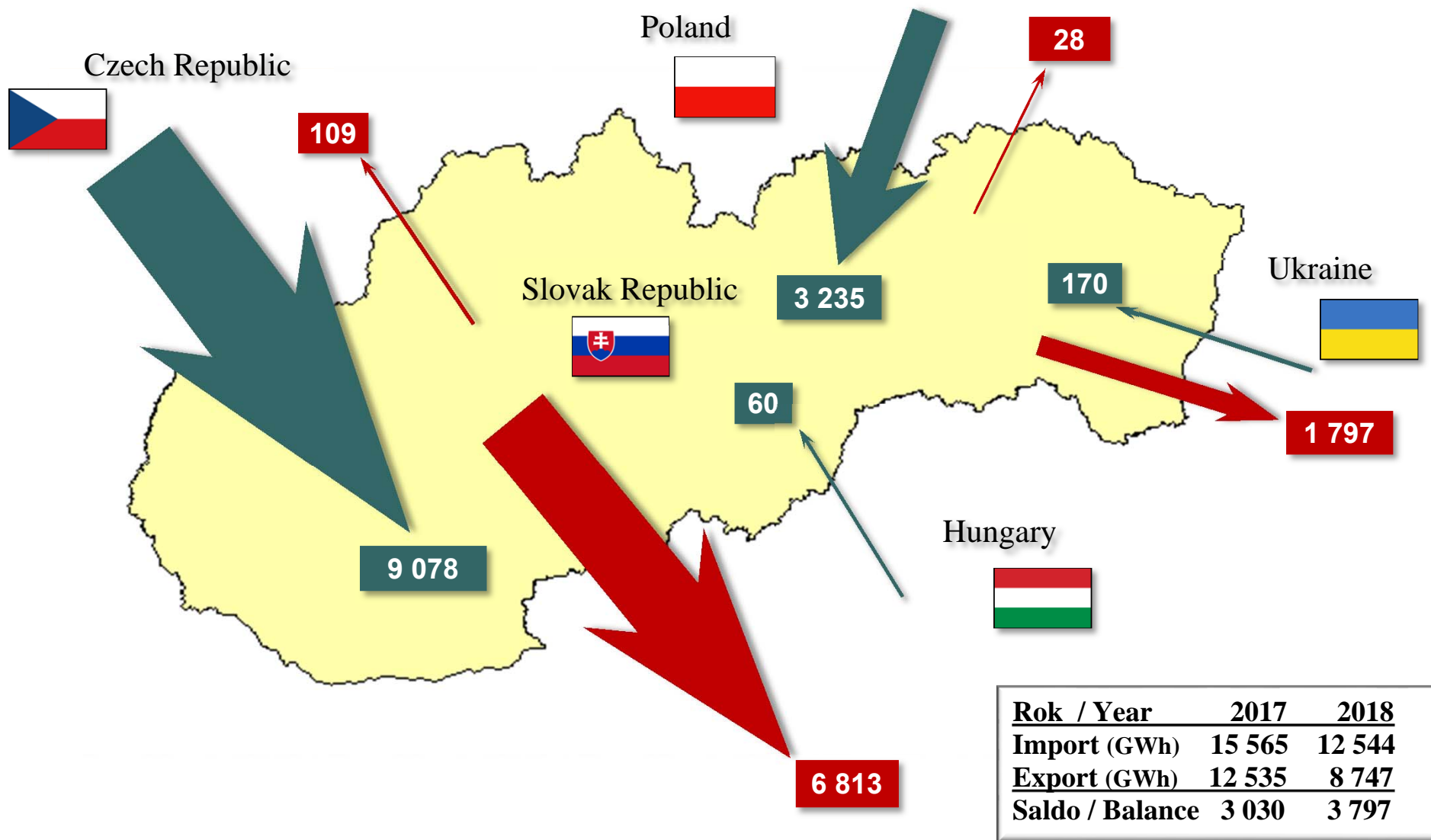
ROČNÁ VÝROBA A SPOTREBA ELEKTRINY Yearly Electricity Production and Consumption



PODIEL ZDROJOV NA VÝROBE ELEKTRINY V ROKU 2018 Share of Sources in the Electricity Production of the Year 2018

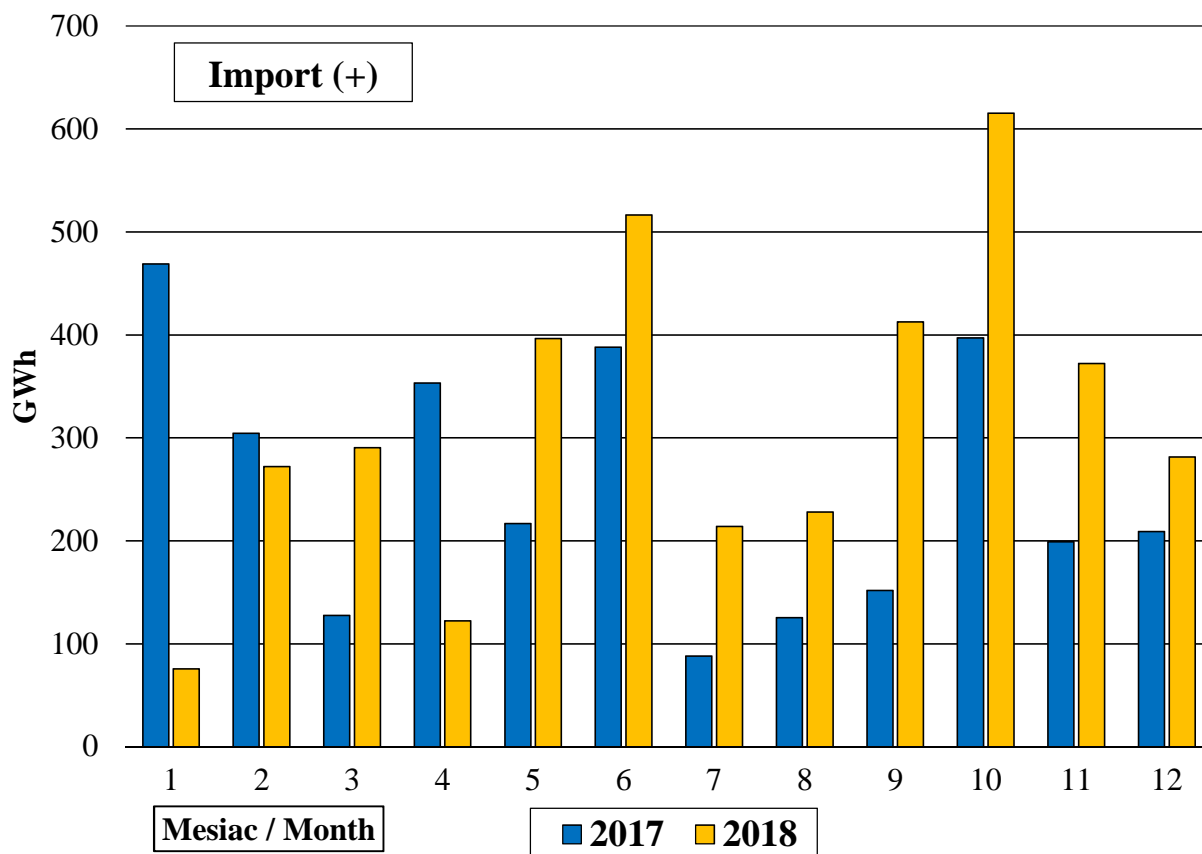


NAMERANÉ CEZHRANIČNÉ TOKY ELEKTRINY ES SR ZA ROK 2018 v GWh
Metered (physical) Cross-Border Flows of Electricity in the year 2018 in GWh



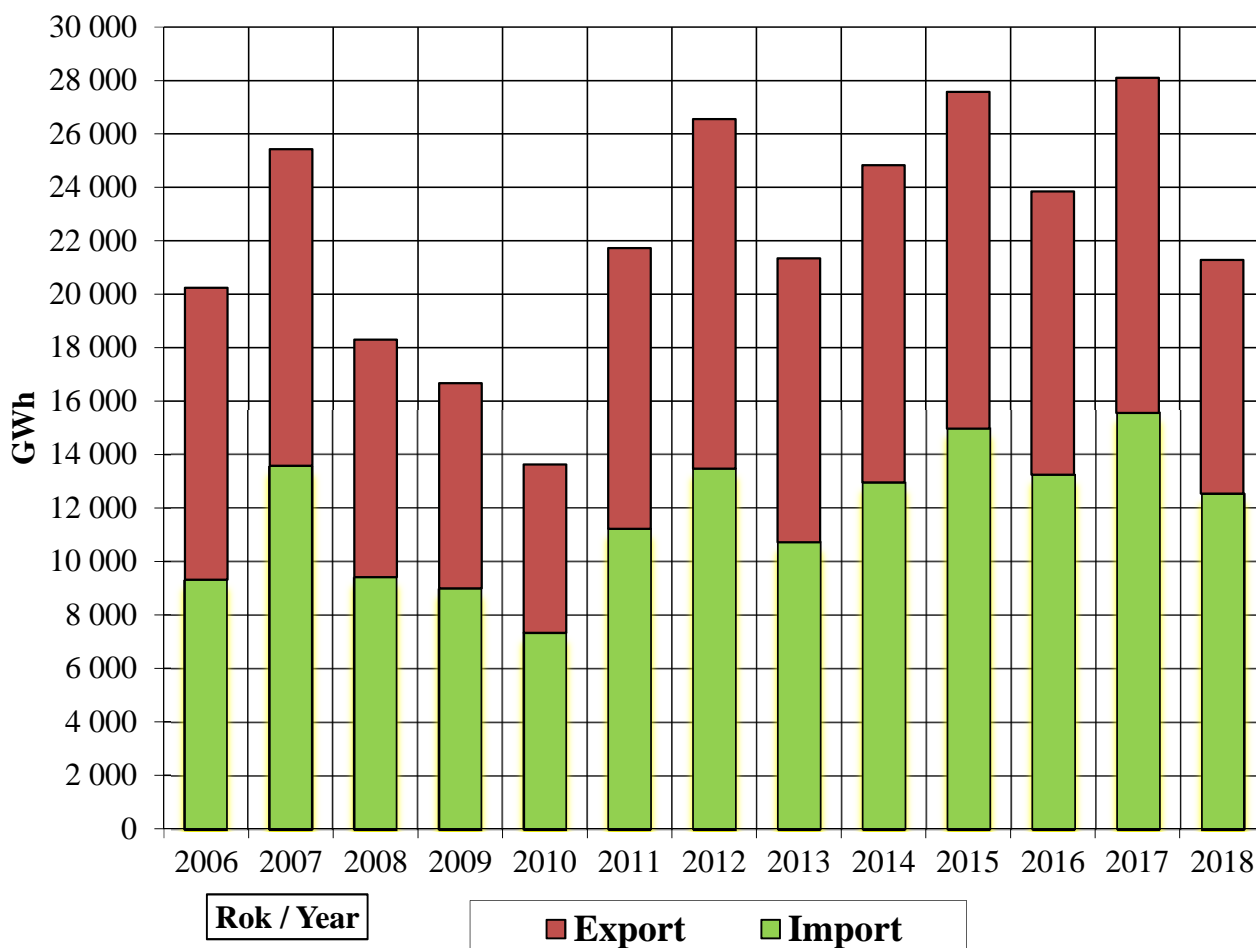
NAMERANÉ CEZHRANIČNÉ SALDO V ROKOCH 2017 - 2018

Balance of Cross-Border Physical Flows in Years 2017 - 2018



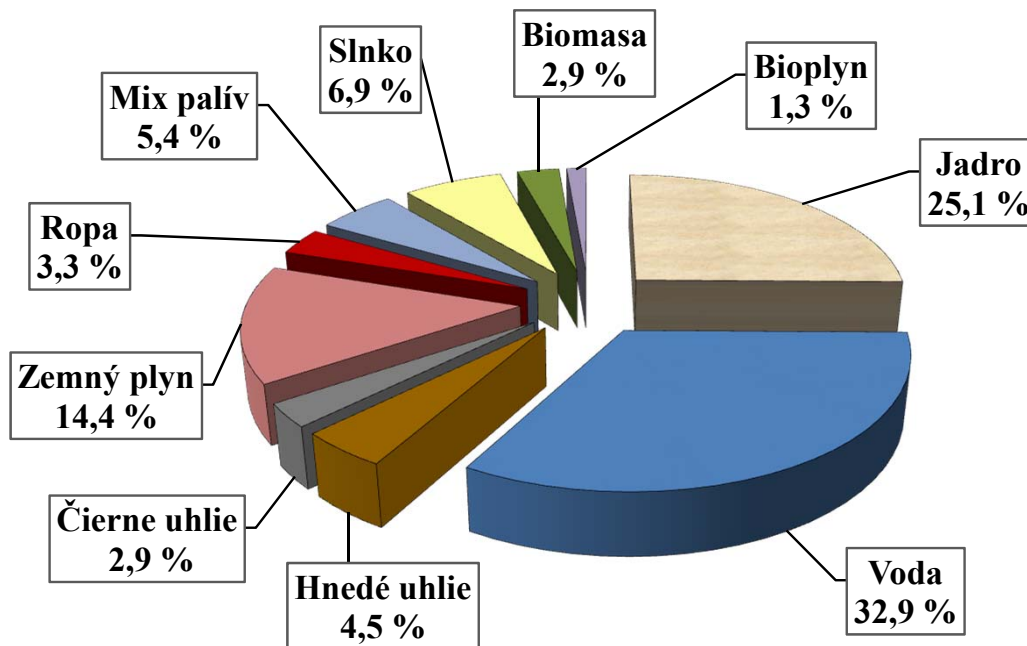
NAMERANÉ ROČNÉ CEZHRANIČNÉ TOKY SLOVENSKA

Yearly Cross-Border Physical Flows of Slovakia



INŠTALOVANÝ VÝKON ELEKTRÁRNÍ SLOVENSKA V ROKU 2018 Installed Capacity of Power plants in Slovakia in the Year 2018

Rozdelenie podľa Palív Shared by Fuels		Výkon (MW) Power (MW)	Podiel (%) Share (%)	
Jadro	Nuclear	1 940	25,1	
Voda	Hydro	2 542	32,9	
Hnedé uhlie	Lignite	345	4,5	Fosilné Fossil
Čierne uhlie	Hard coal	221	2,9	
Zemný plyn	Natural gas	1 111	14,4	
Ropa	Oil	257	3,3	
Mix palív	Mixed fuels	419	5,4	
Slnko	Solar	531	6,9	Obnoviteľné Renewable
Biomasa	Biomass	224	2,9	
Bioplyn	Biofuel	104	1,3	
Vietor	Wind	3	--	
Iné OZE	Other RES	12	0,2	
Ostatné	Others	19	0,2	
Spolu	Total	7 728		



PRENOSOVÁ SÚSTAVA SLOVENSKEJ REPUBLIKY V ROKU 2018 Transmission System of Slovak Republic in the Year 2018

Vedenia 400 kV	2 138 km	400 kV Lines
Vedenia 220 kV	790 km	220 kV Lines
Vedenia 110 kV	80 km	110 kV Lines
Celková dĺžka vedení	3 008 km	Total length of lines
Počet el. staníc 400 kV	19	Number of 400 kV Substations
Počet el. staníc 220 kV	6	Number of 220 kV Substations
Počet el. staníc 110 kV	1	Number of 110 kV Substations
Transformátory 400/220 kV	1 400 MVA	400/220 kV Transformers
Transformátory 400/110 kV	8 730 MVA	400/110 kV Transformers
Transformátory 220/110 kV	1 600 MVA	220/110 kV Transformers
Celkový transformačný výkon	11 730 MVA	Total transformation capacity